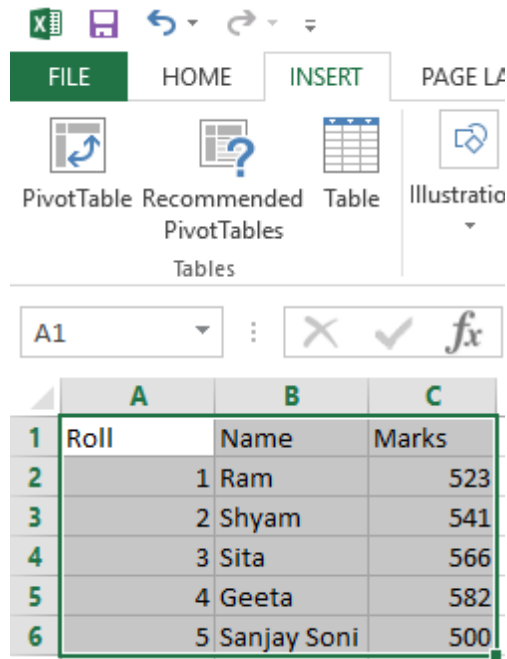


## Q. What are the various types of charts available in MS Excel?

Ans:- Chart is a graphical way of representing a data report for easy analysable and understandable to a common man also. There are some special types of charts for different types of data to be demonstrated easily and meaningfully:-

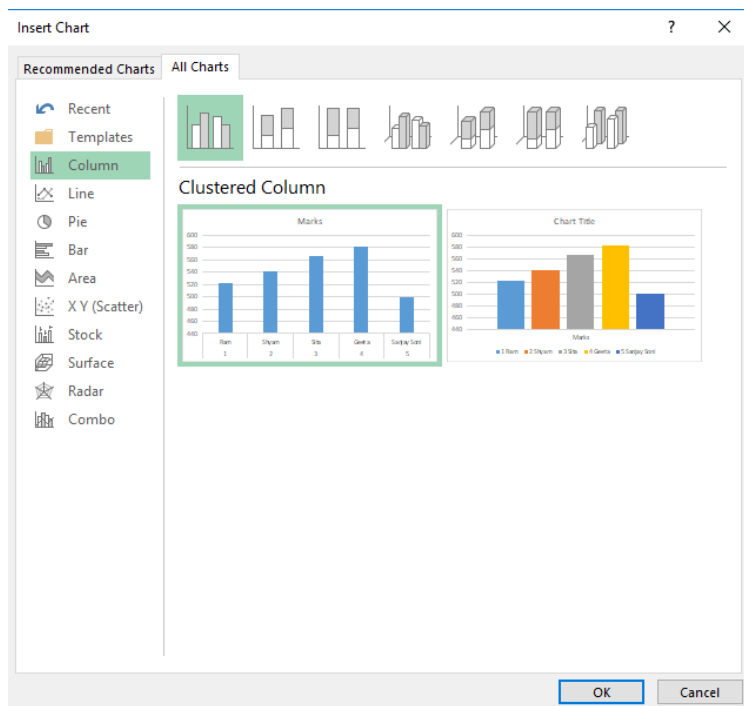
For a particular data the different types of graphs looks as below:-



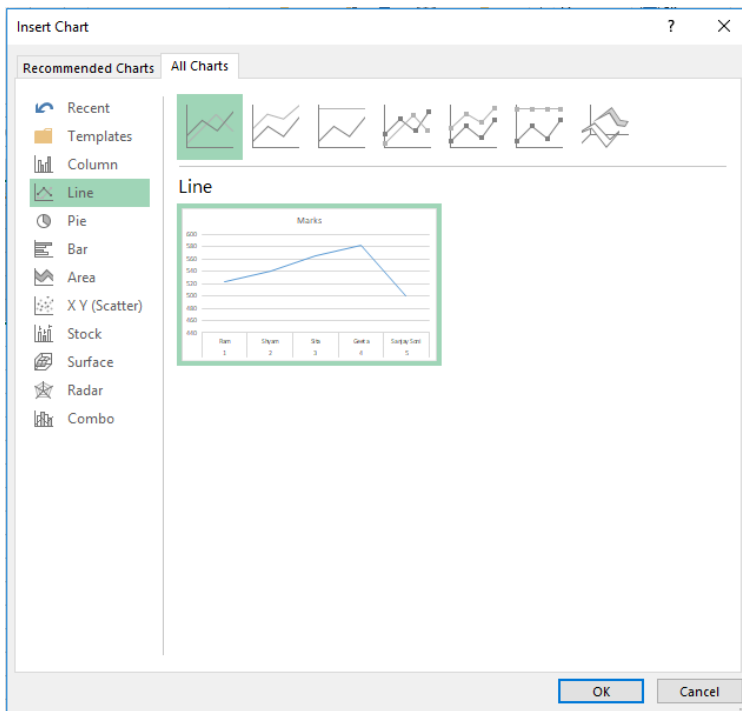
The screenshot shows the Microsoft Excel interface with the 'INSERT' tab selected. Below the ribbon, a data table is displayed with the following content:

|   | A    | B             | C     |
|---|------|---------------|-------|
| 1 | Roll | Name          | Marks |
| 2 |      | 1 Ram         | 523   |
| 3 |      | 2 Shyam       | 541   |
| 4 |      | 3 Sita        | 566   |
| 5 |      | 4 Geeta       | 582   |
| 6 |      | 5 Sanjay Soni | 500   |

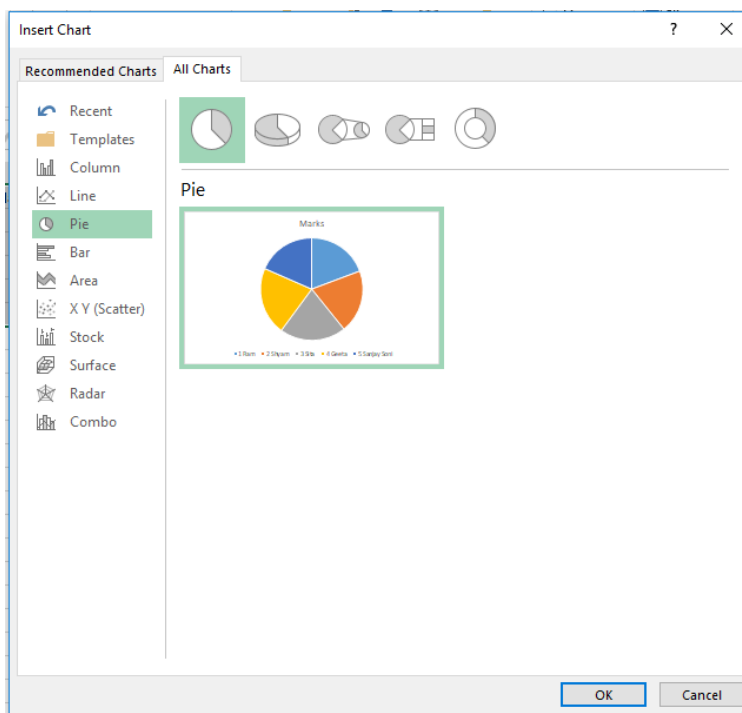
Column Chart:- It looks like:-



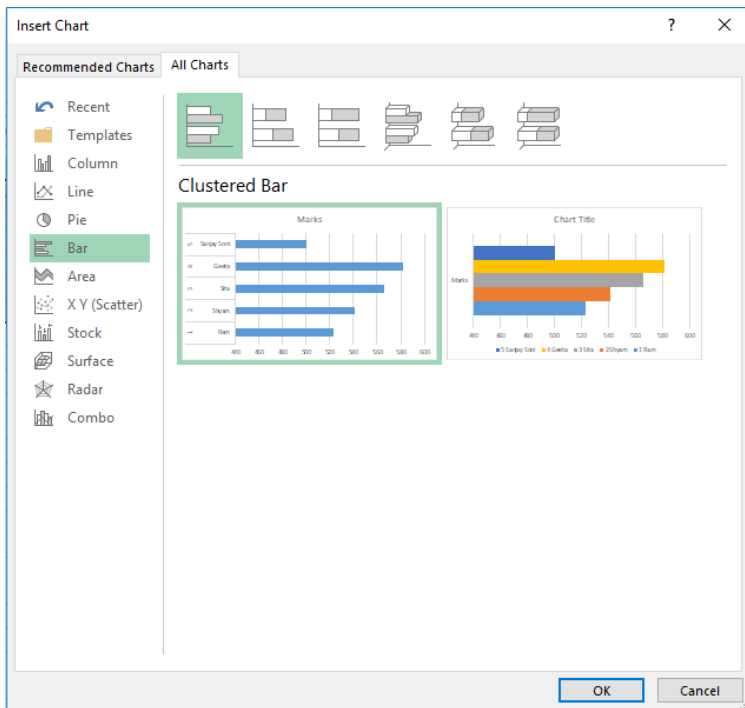
Line Chart:- It looks like :-



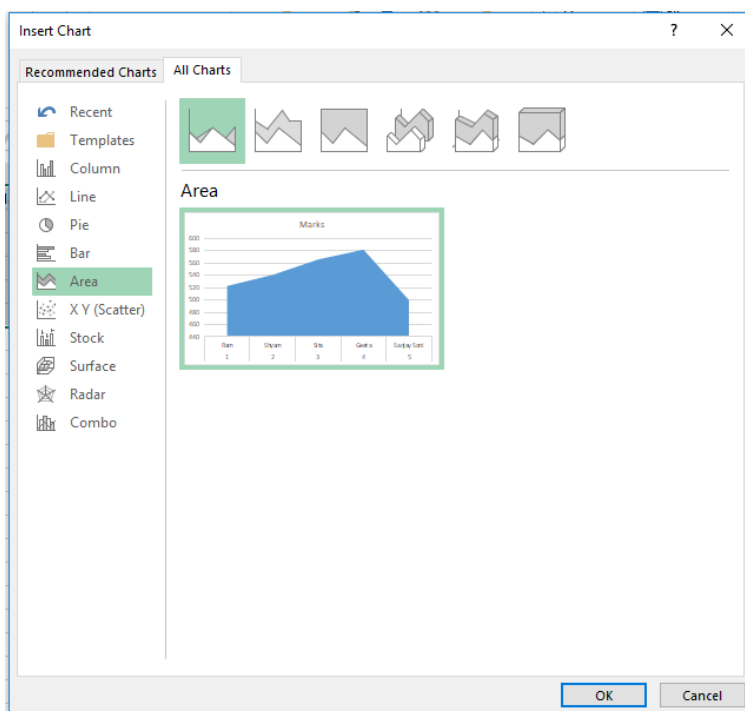
Pie Chart:- It looks like:-



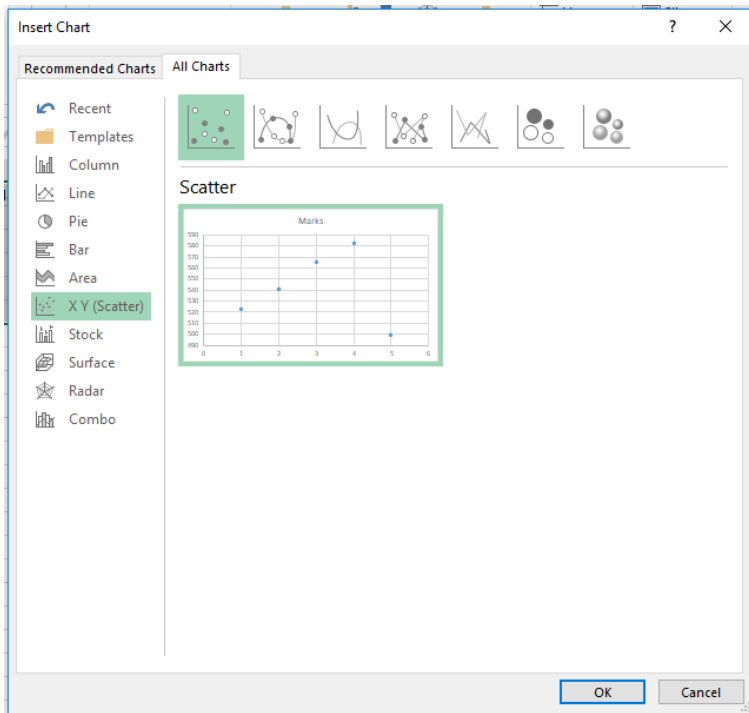
Bar Chart:- It looks like:-



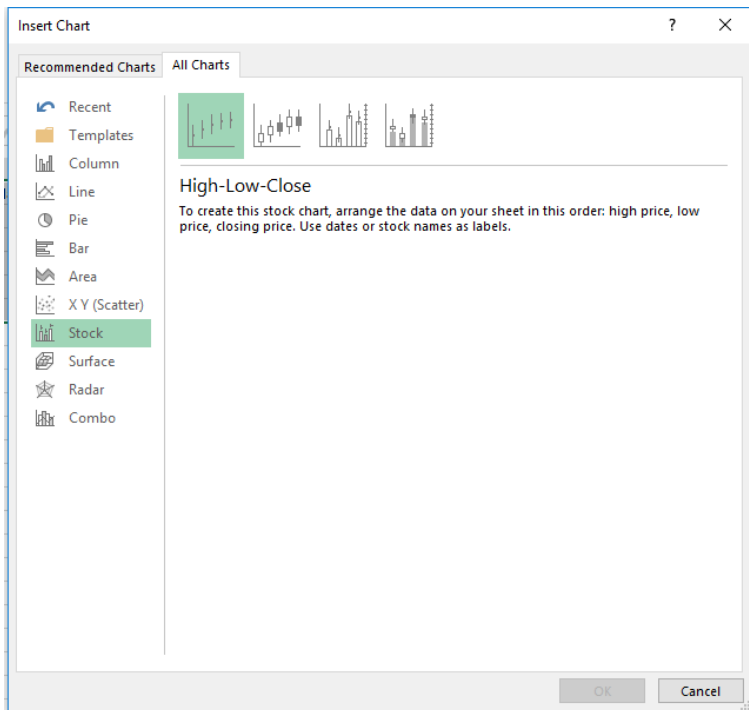
Area Chart:- It looks like:-



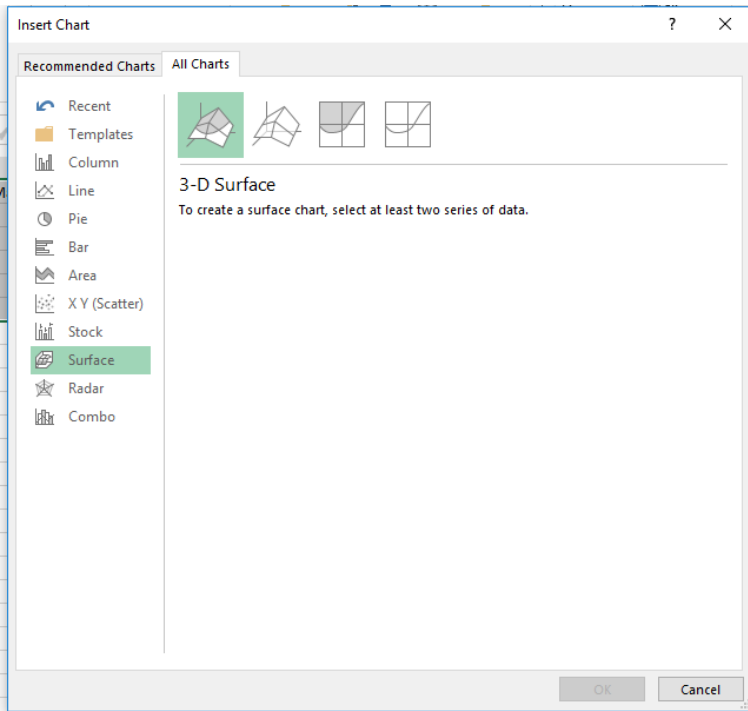
XY Scatter Chart:- It looks like:-



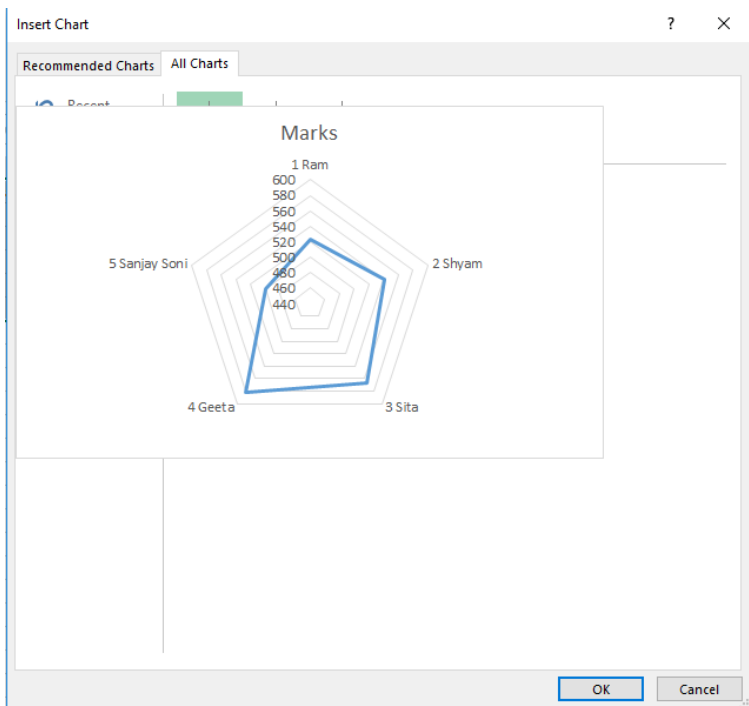
Stock Chart:- It Looks like:-



Surface Chart:- It looks like:-



Radar Chart:- It looks like:-



Combo Chart:- It looks like:-

